



MODERN BUILDING SYSTEMS, INC.

"The Environmentally Smart Choice..."

Project Summary

Grandview School

www.mbs-modular.com



Grandview School District is located in the southern area of eastern Washington near the Columbia Gorge. The school was in the process of completely renovating space in two of their schools and needed to house students while this lengthy project ensued.

Modern Building Systems constructed and shipped 20,000 square feet of modules to the site and then constructed the interior corridor for this project on site using pre-cut wall, roof truss and floor assemblies. The corridor had to be site constructed due to transportation limits on length and height.

Building a spacious corridor not only allowed for easy movement of children as they passed from class to class, but also facilitated space for heat/air conditioning ducting, fire sprinkler piping and phone/data wiring to be routed above the suspended ceiling.

Utilizing modular construction for some of the new space required for this school, gave more time to complete the site built portion of this project without sacrificing school days while construction ensued.

Ensuring that this modular space tied in with the new site built space being constructed, the same finishes were used. Custom wallpaper on interior walls, custom built casework, cherry laminated interior doors with welded frames and re-lites and solid plastic partitions in restrooms, to name a few of the quality finishes.

Features:

- **Finishes to match new construction**
- **Cement fibrous lap siding**
- **Custom built plastic laminate shelving and cabinetry**
- **Complete sprinkler & fire alarm systems**
- **Tight timelines for completion**

P.O. Box 110 9493 Porter Road
Aumsville, OR 97325 USA
tel: 503.749.4949
fax: 503.749.4950

1550 Thornton Avenue SW
Pacific, WA 98047 USA
tel: 253.863.8863
fax: 253.863.8867



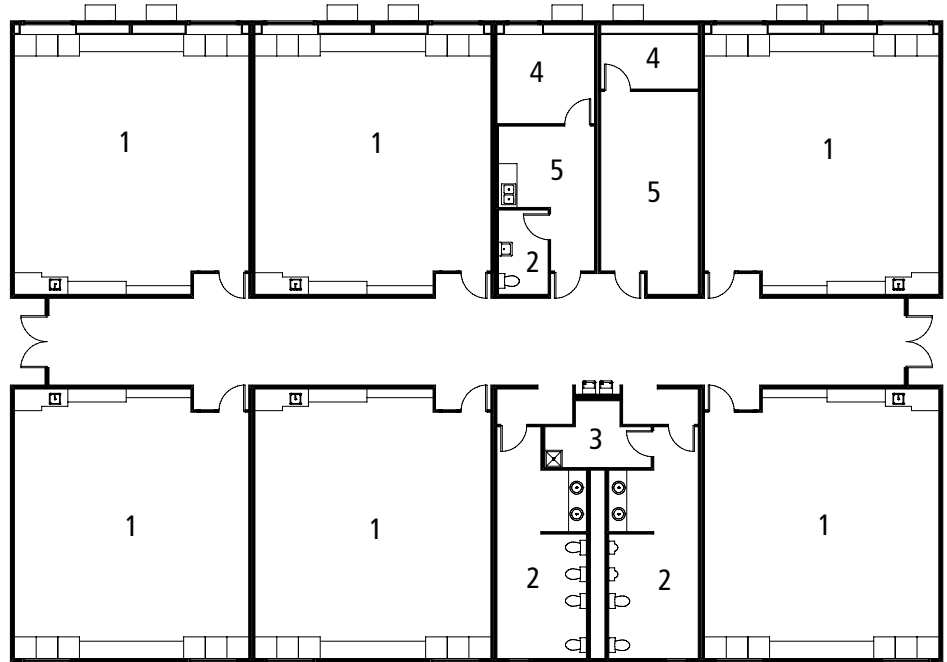
MODERN BUILDING SYSTEMS, INC.

"The Environmentally Smart Choice..."

Grandview School

Grandview School District Classroom Modules

1. Classrooms
2. Restrooms
3. Storage
4. Office
5. Workroom



Modern Building Systems, Inc. Mobile and Modular Offices: Tomorrow's Solutions Today

When you consider the time, cost and flexibility your new building will involve—consider **Modern Building Systems**.

We offer speed and efficiency for expansion or relocation and can build to compliment existing structures. Our economical, attractive, and functional commercial space is built with environmentally responsible turnkey construction.

Complete services include design and engineering offering potential savings in construction costs over site-built buildings. Your complete facility will be built on our premises and is ready for immediate occupancy on your land within days. If you need, the entire modular building can be relocated to another site in the future.

Our personal service and professional staff will work with you to meet all your building needs. For an accurate advance estimate of the budget and time requirements of a modular solution, call today for more information.

"Modular buildings are fantastic. As soon as I can I'm going to build another. I can't understand why more people aren't building modular."

Jim Aydelott, Symantec Corporation, Operations Manager
Seattle Daily Journal of Commerce

Modern Building Systems, Inc.

800.682.1422

Visit us at:

www.mbs-modular.com

P.O. Box 110 9493 Porter Road

Aumsville, OR 97325 USA

tel: 503.749.4949

fax: 503.749.4950

Washington

1550 Thornton Avenue SW

Pacific, WA 98047 USA

tel: 253.863.8863

fax: 253.863.8867

www.mbs-modular.com